



OPEN BACK TOP

Created by Anna Erneborg

Sew a light and playful summer top that's perfect for warm days. This easy-going design ties in the back with straps made from fabric scraps, adding a fun and colorful twist to every piece. Use up your leftovers and make each top unique.

Decorate the front however you like with sea-inspired motifs—think shells, waves, or other coastal details. The PDF pattern comes in sizes Small to X-Large and is great for creative beginners and up.

CATEGORY:

- Sewing

SKILL LEVEL:

- Intermediate

MACHINE:

- Sewing Machine
- Serger (optional)

TOOLS/ACCESSORIES:

- Iron and Ironing Board
- Ruler
- Chopstick

MATERIALS:

- Cotton or Linnen Fabric 1yd, 60" wide (90 cm, 150 cm wide)
- Contrasting Color Fabric for Tie Straps Two pieces 5" x 24" (12cm x 60cm) each
- Fusible Lightweight Interfacing
- Thread

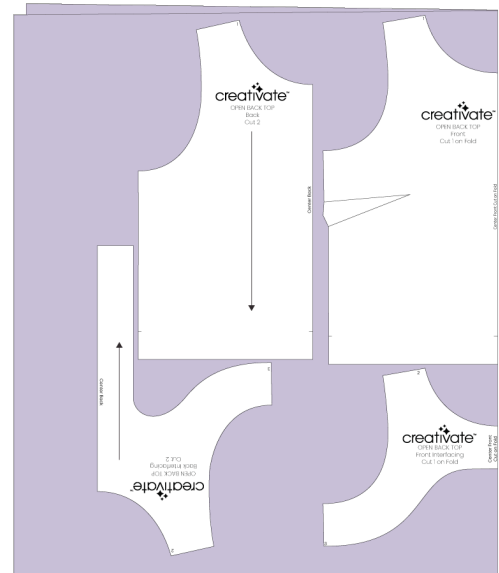


Print the Pattern

Step 1: Print the PDF pattern at 100% scale (do not shrink or fit to page). Cut out the desired size. The pattern includes a 3/8" (1 cm) seam allowance and a 1 5/8" (4 cm) hem allowance.

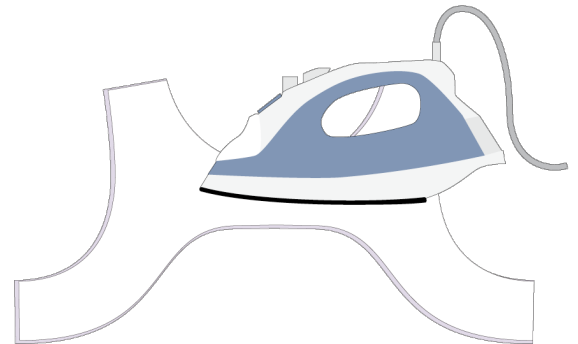
Cut the Material

Step 2: Lay out your pattern pieces on the fabric and cut out all pieces. Mark the darts on the wrong side of the fabric.



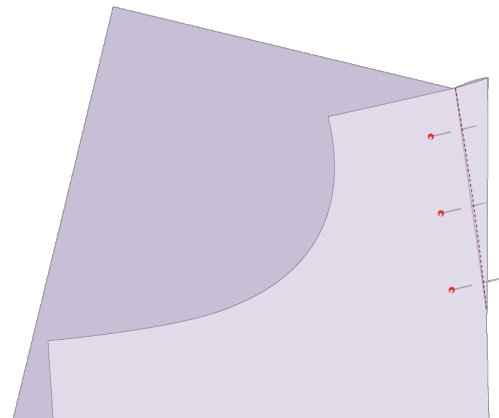
Apply the Interfacing

Step 3: Apply the fusible interfacing to the wrong side of the facing pieces, following the manufacturer's instructions.



Sew the Darts

Step 4: Start sewing each dart at the wide end. Backstitch to secure, then sew toward the point. Press the darts downward.





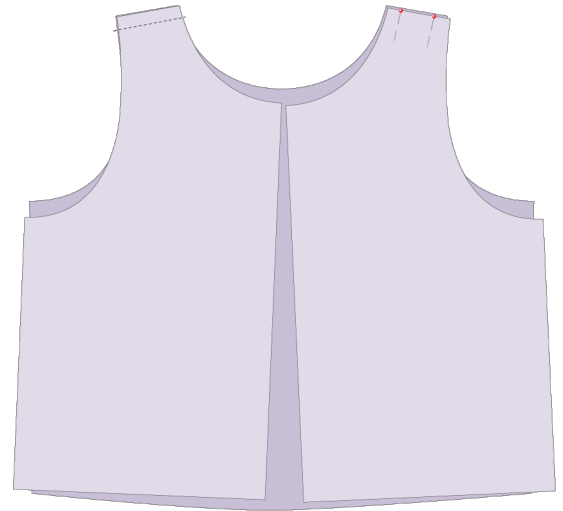
Sew the Shoulder Seams

Step 5: Place the front and back pieces right sides together.

Pin the shoulder seams (seam #1) and stitch using a $\frac{3}{8}$ " (1 cm) seam allowance.

Press the seams open.

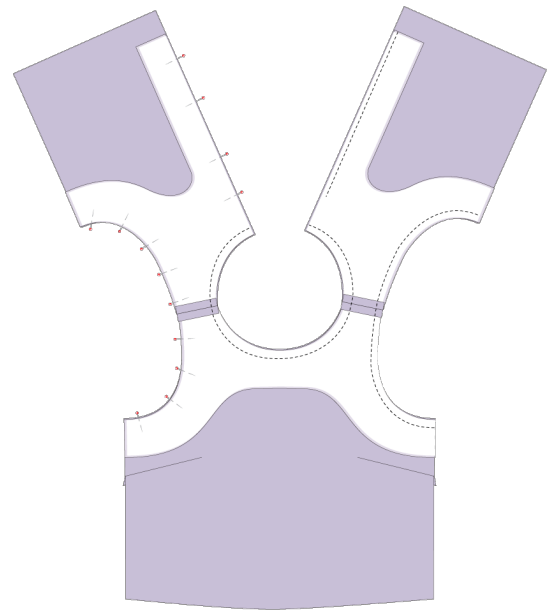
Repeat this step for the interfacing shoulder seams (seam #2).



Sew the Interfacing

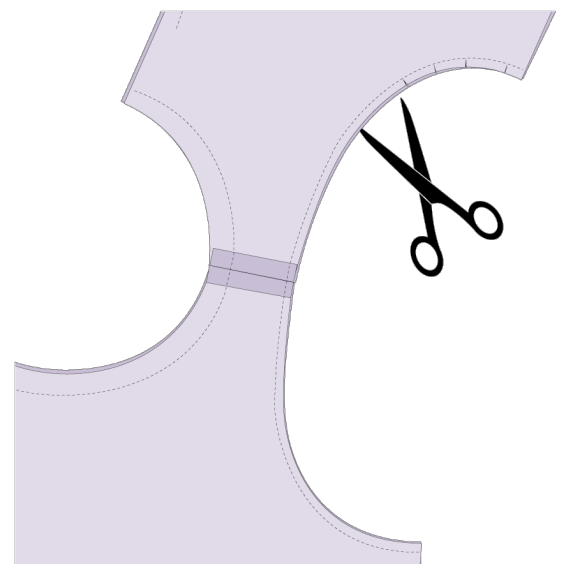
Step 6: Place the interfacing on the top front and back, aligning all edges and matching the shoulder seams.

Pin in place. Sew around the neckline and armholes, leaving a 2" (5 cm) opening at the top of the back placket interfacing.



Trim the Seams

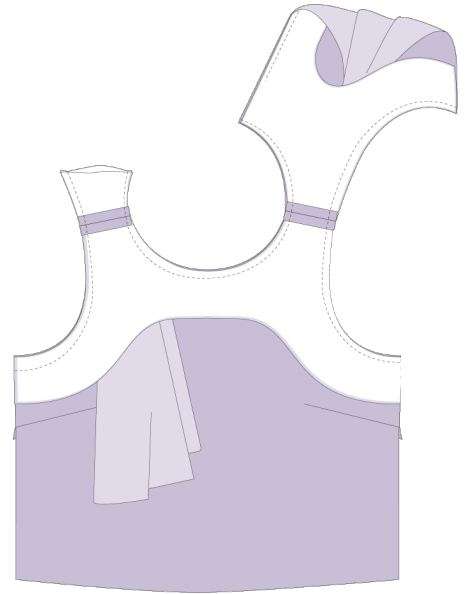
Step 7: Trim the seam allowances down to $\frac{1}{4}$ " (6 mm) and clip the curves.





Turn the Right Side Out

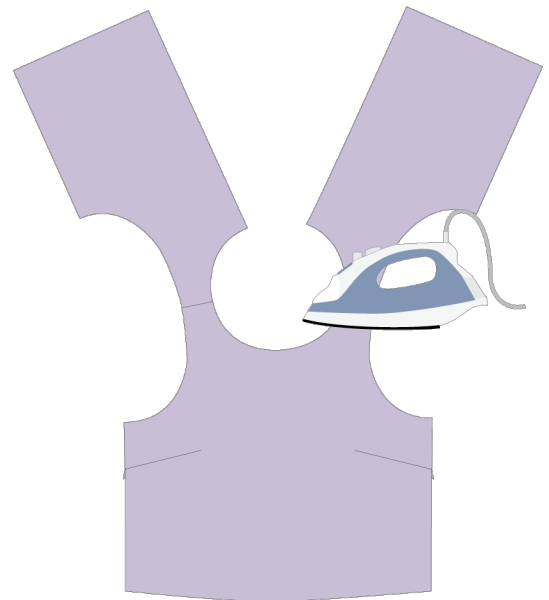
Step 8: Carefully pull the back pieces through the shoulders to turn the garment right side out. This can be tricky due to the narrow shoulder width—take your time.



Press the Seams

Step 9: Press all seams flat.

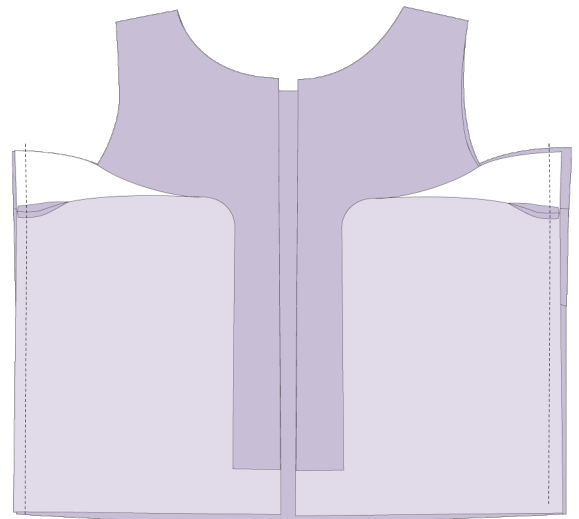
Tip: To prevent the interfacing from showing on the right side of the garment, understitch along the neckline as far as you can comfortably reach.



Sew the Side Seams

Step 10: Pin the front and back pieces together at the side seams (seam #3), matching the interfacing seams.

Stitch using a 3/8" (1 cm) seam allowance.





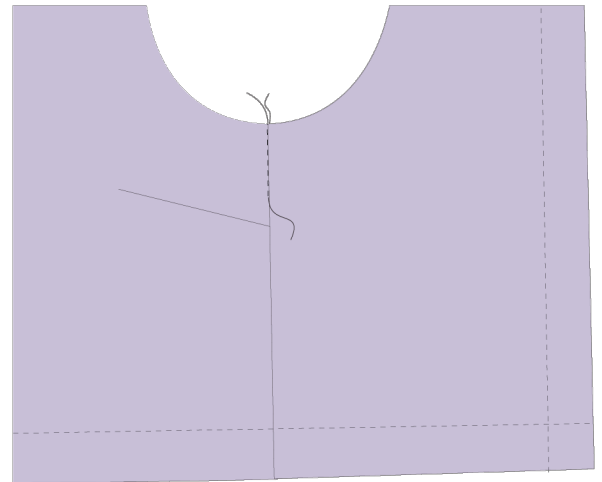
Finish The Seams

Step 11: Finish the raw edges of the side seams and the interfacing edges using a serger or a zigzag stitch on your sewing machine. Press the side seams toward the back of the garment.



Secure the Armhole Facing

Step 12: From the right side of the garment, stitch in the ditch at the side seams to secure the armhole facing in place.



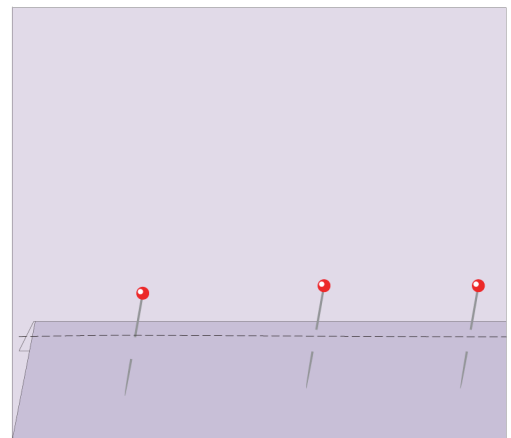
Hem the Bottom Edge

Step 13: Create a double-fold hem at the bottom of the blouse.

Fold the fabric toward the wrong side by $\frac{3}{8}$ " (1 cm) and press, using a ruler to keep the fold even.

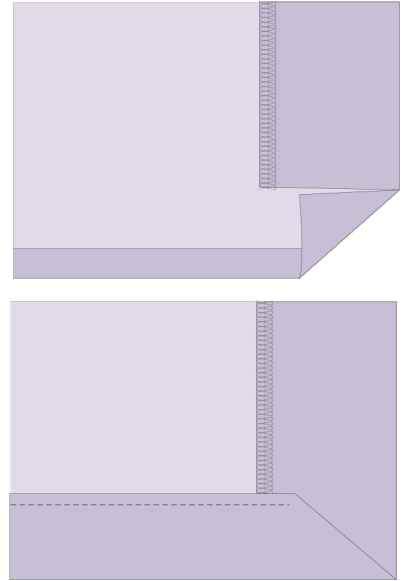
Fold again toward the wrong side by $\frac{1}{4}$ " (3 cm). Press and pin in place.

Sew close to the inner folded edge to secure the hem.





Tip: Where the hem meets the back interfacing/placket, fold the hem diagonally to create a neat mitered corner.



Cut the Tie Straps

Step 14: Make the tie straps from matching or contrasting fabric. Cut two fabric pieces measuring 5" x 24" (12x 60 cm) each.

Tip: Make the straps from different fabric pieces sewn together into one long strip then trimmed down to the right size.



Sew the Straps

Step 15: Fold each strip in half lengthwise, right sides together.

Sew along one long edge and one short end. Turn right side out and press. A chopstick or turning tool can help.

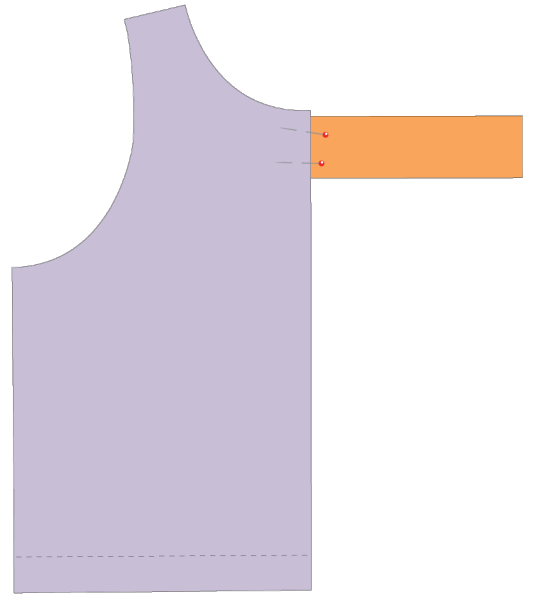


Optional: Topstitch close to the edge for a clean, finished look.



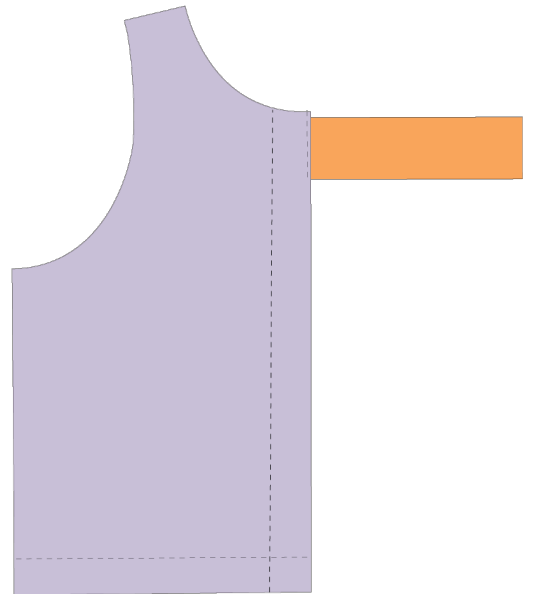
Attach the Straps

Step 16: Insert the raw ends of the straps into the opening at the top of the back placket. Secure them by sewing from the inside, or topstitch from the right side to close the opening.



Stitch the Back Placket

Step 17: Stitch down the back placket to secure the interfacing in place.



Decorate the Top

Step 18: Add a sea-inspired motif to your blouse using heat transfer vinyl (HTV), appliqué, or embroidery—and let your creativity run free. Learn more about applying heat transfer vinyl [here](#).

